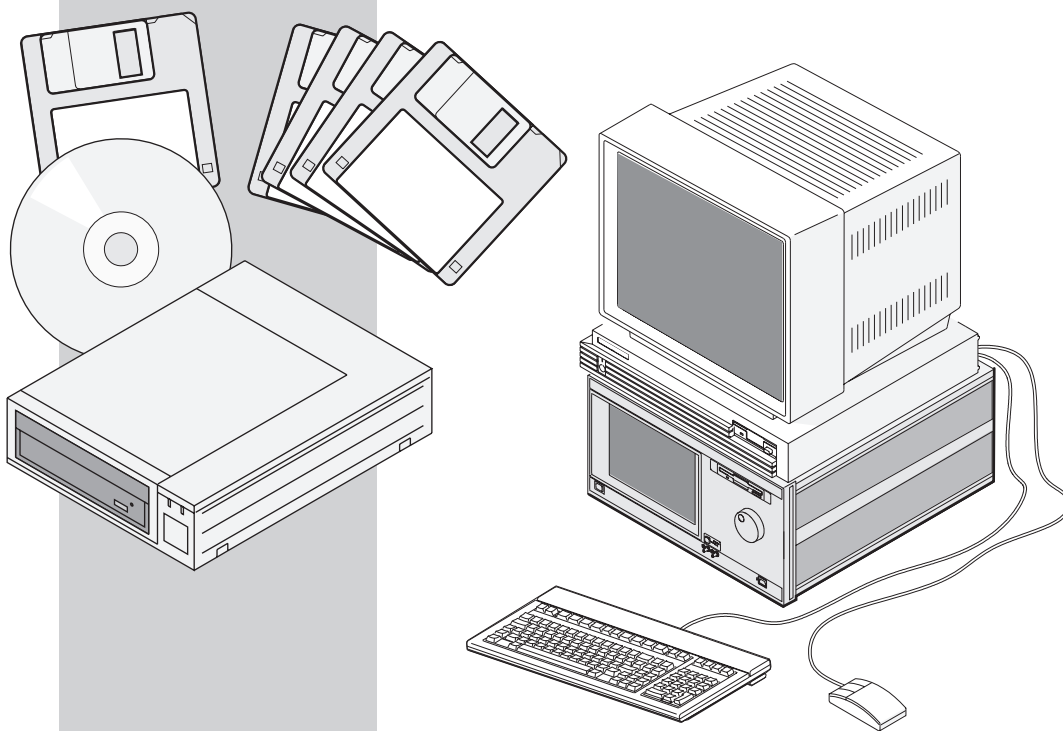


Installation Guide

For Safety Information, Warranties, and Regulatory information, see the pages at the back of this guide.

© Copyright Hewlett-Packard Company 1997
All Rights Reserved

Software Upgrade



Publication Number 16505-92010
First Edition, June 1997

HP 16505A Prototype Analyzer



Contents

This Installation Guide covers two HP 16505A software upgrade/install procedures:

- Updating the HP 16500B/C logic analyzer with floppy disks and the HP 16505A prototype analyzer with CD-ROM and floppy disk.

Power-Down the HP 16505A Page 3

Upgrade the HP 16500 Pages 4-7

Upgrade the HP 16505A Pages 8-13

Power-Up the HP 16505A System Page 14

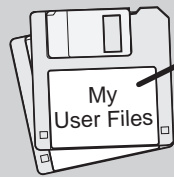
Installing HP 16505A features/product support using floppy disks.

Installing Additional Features/Product Support Pages 15-20

Note! The upgrade preserves all user files, directories, passwords, and network setup. The upgrade is done via local session.

Power-Down the HP 16505A System

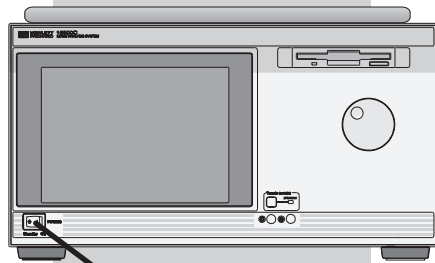
Back up your files and power down the target and system.



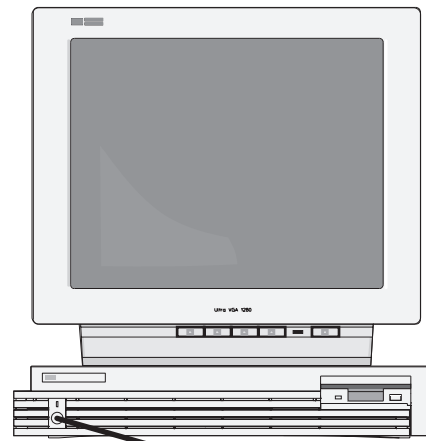
1 Back up your "user files".

Note! It is always best practice to back up your HP 16500 and HP 16505A user files via floppy or network.

2 Power-down the target.

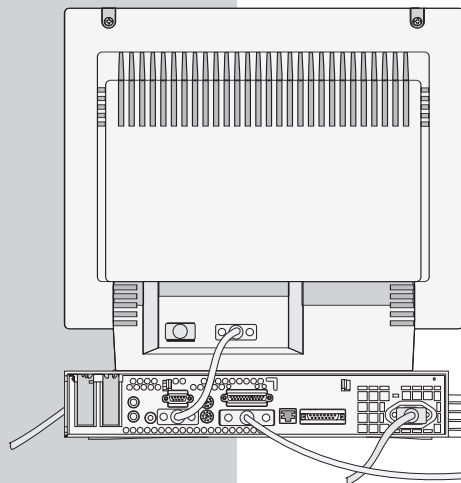


3 HP 16500 Standby Power Switch off.



4 HP 16500 Main Power Switch off.

5 HP 16505A Main Power Switch off.



(Rear Panels)

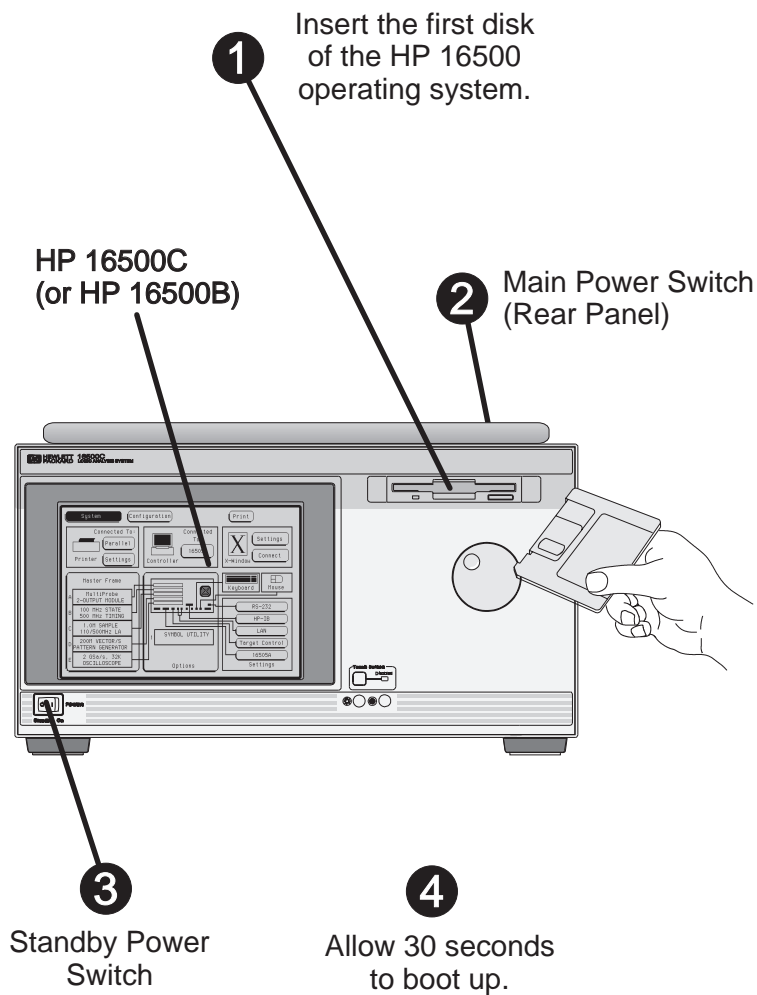
Power-Down the HP 16505A

Upgrade the HP 16500

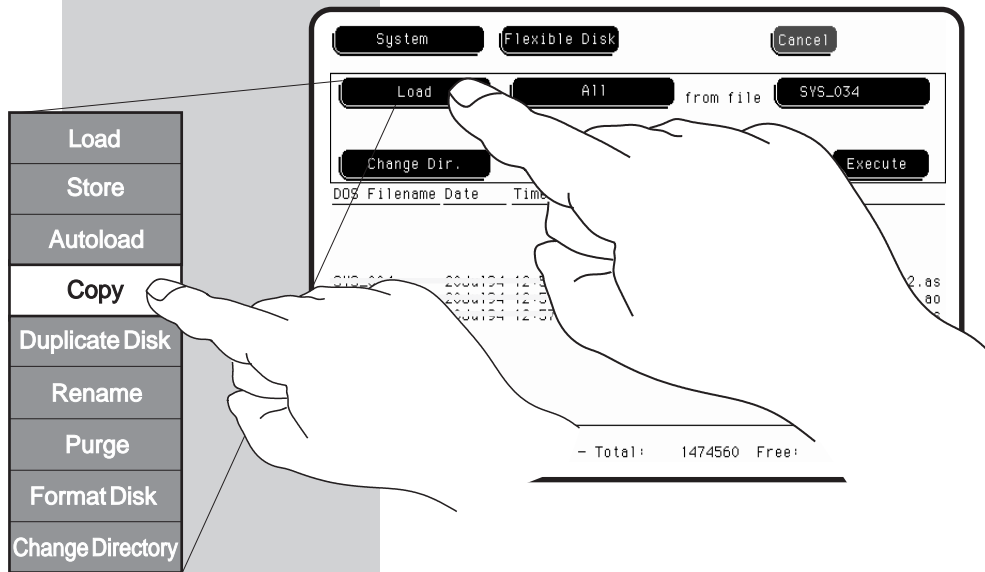
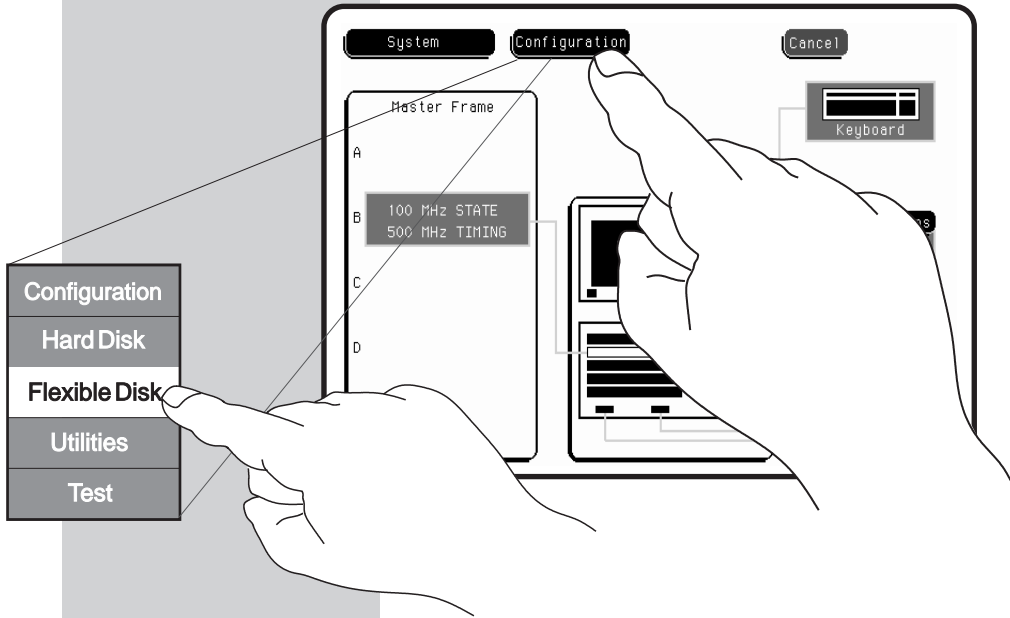
Insert the first software upgrade disk and power-up the HP 16500.

Note!

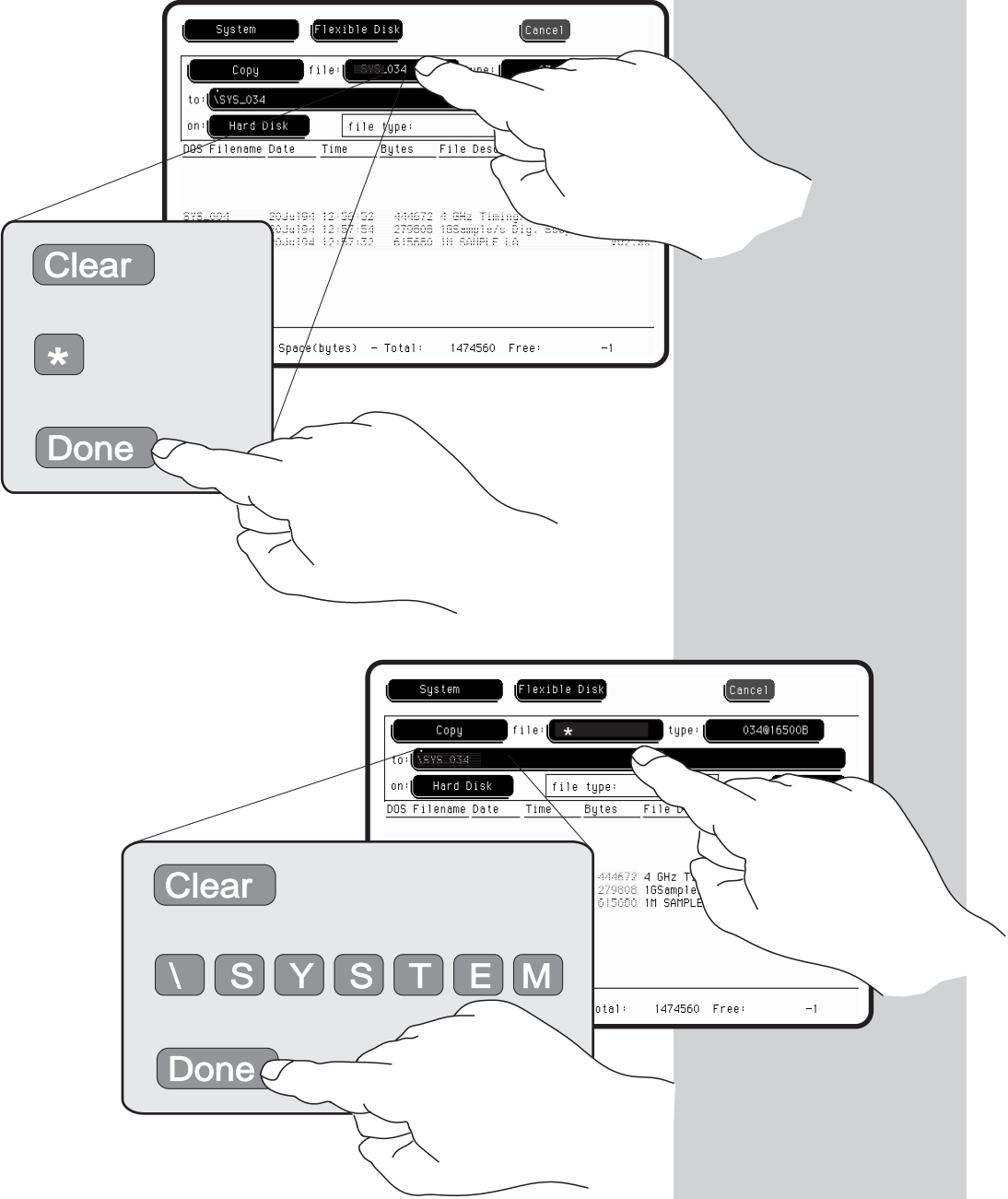
Only the HP 16500 should be turned on when installing the HP 16500 software.



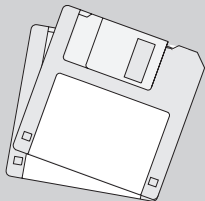
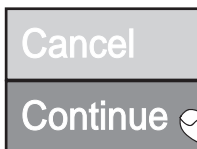
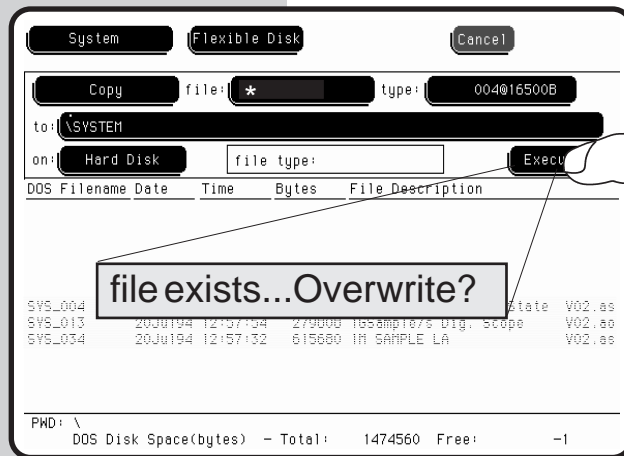
Select the HP 16500 flexible disk drive and set the file operation field to Copy.



Set the source field to the wildcard symbol and set the destination directory to \SYSTEM.



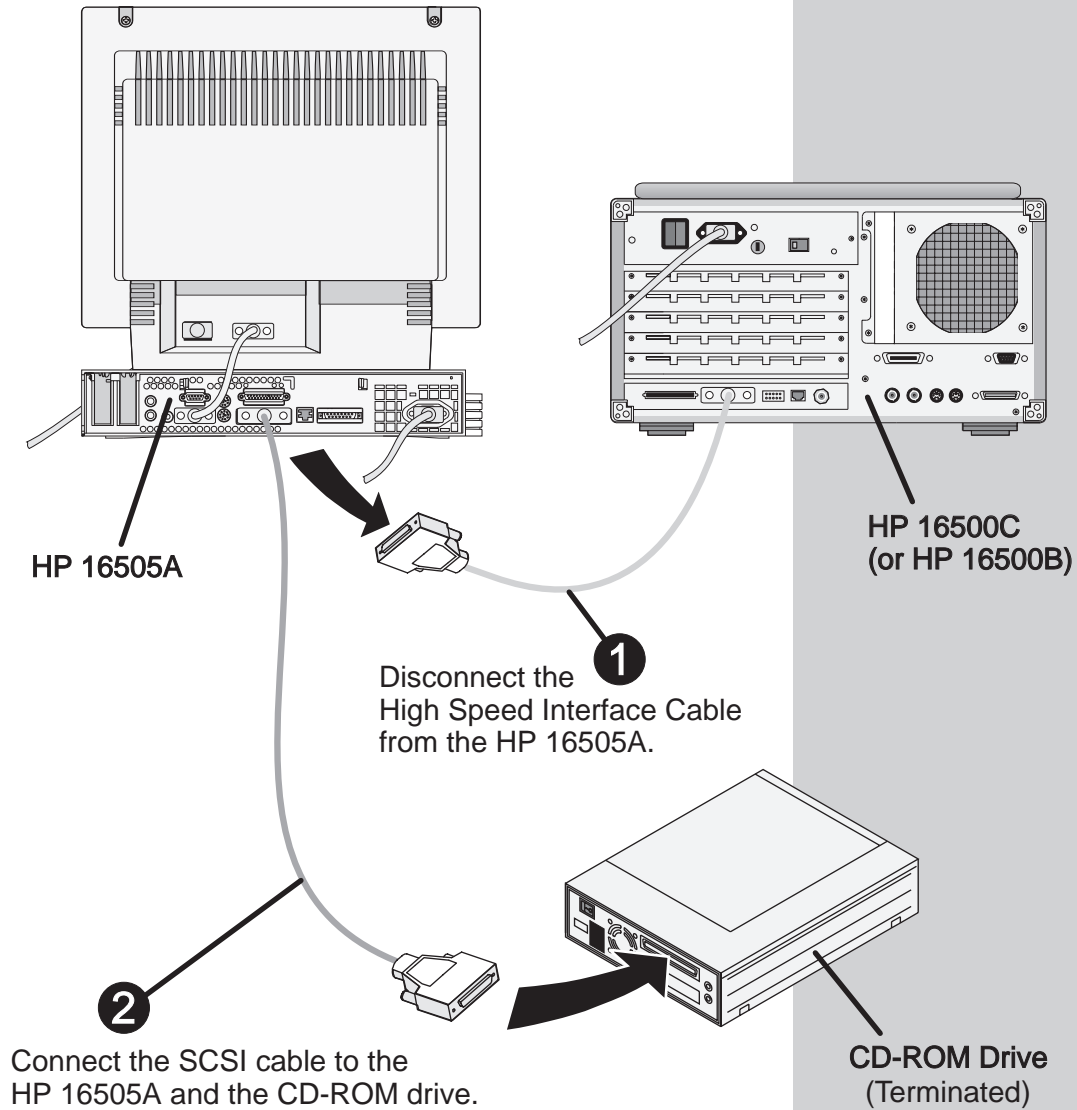
Select Execute to begin copying.



Insert the next disk and repeat this step until all the HP 16500 update files are copied. Remove the last disk *and power-down the instrument.*

Upgrade the HP 16505A

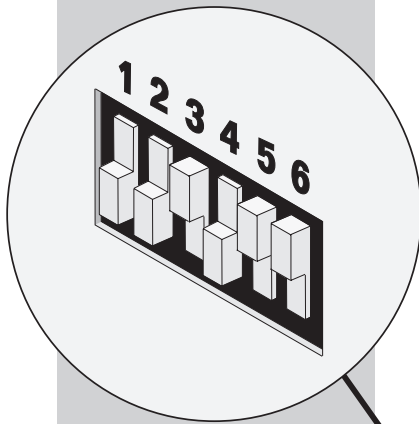
Connect the CD-ROM drive to the HP 16505A.



Note! Unterminated CD-ROM drives may corrupt the HP 16505A hard drive. CD-ROM drives supplied by HP with Rev. A.01.30 have been terminated internally.

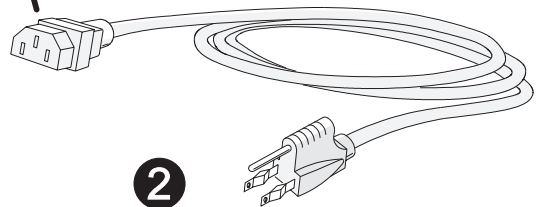
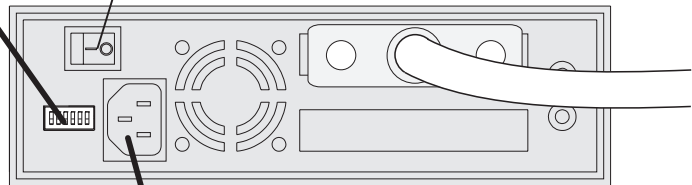
Set the SCSI address and connect the power cable.

- 1 Set the SCSI address to address 4.



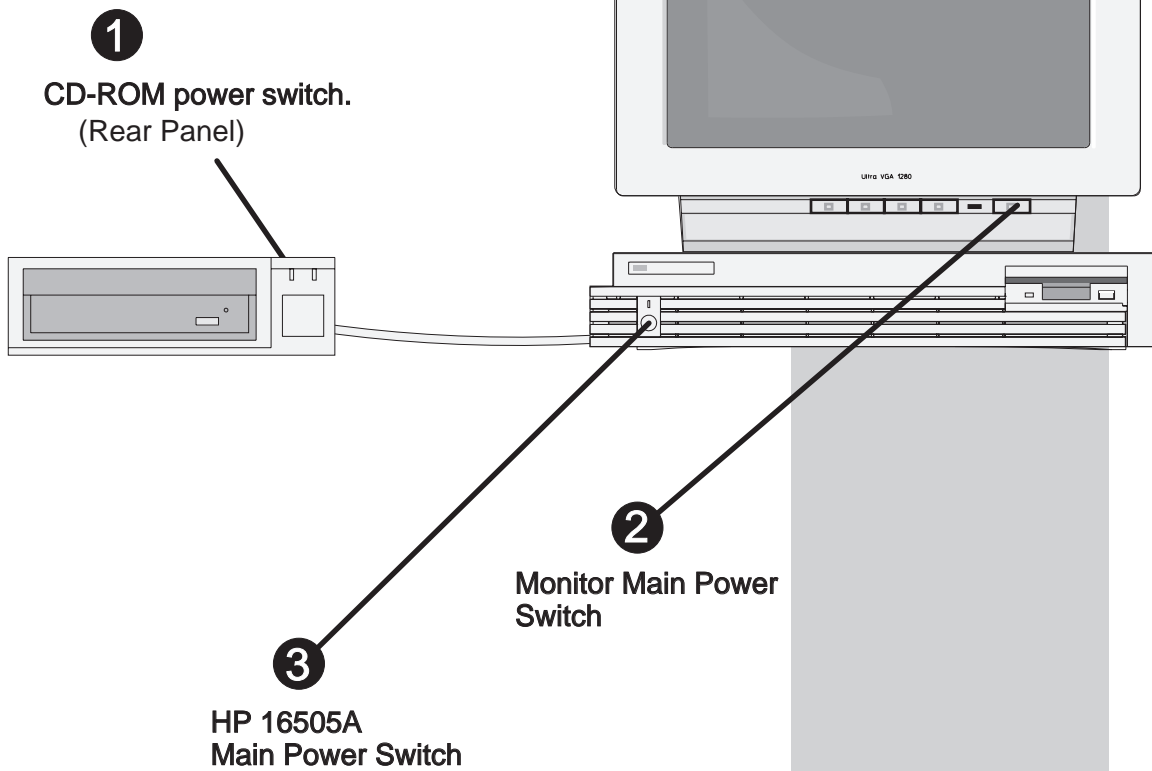
Note! CD-ROM drives supplied by HP with Rev. A.01.30 have the SCSI address set to 4 at the factory. Ensure that the switch settings correspond to this drawing.

(CD-ROM Power Switch.)

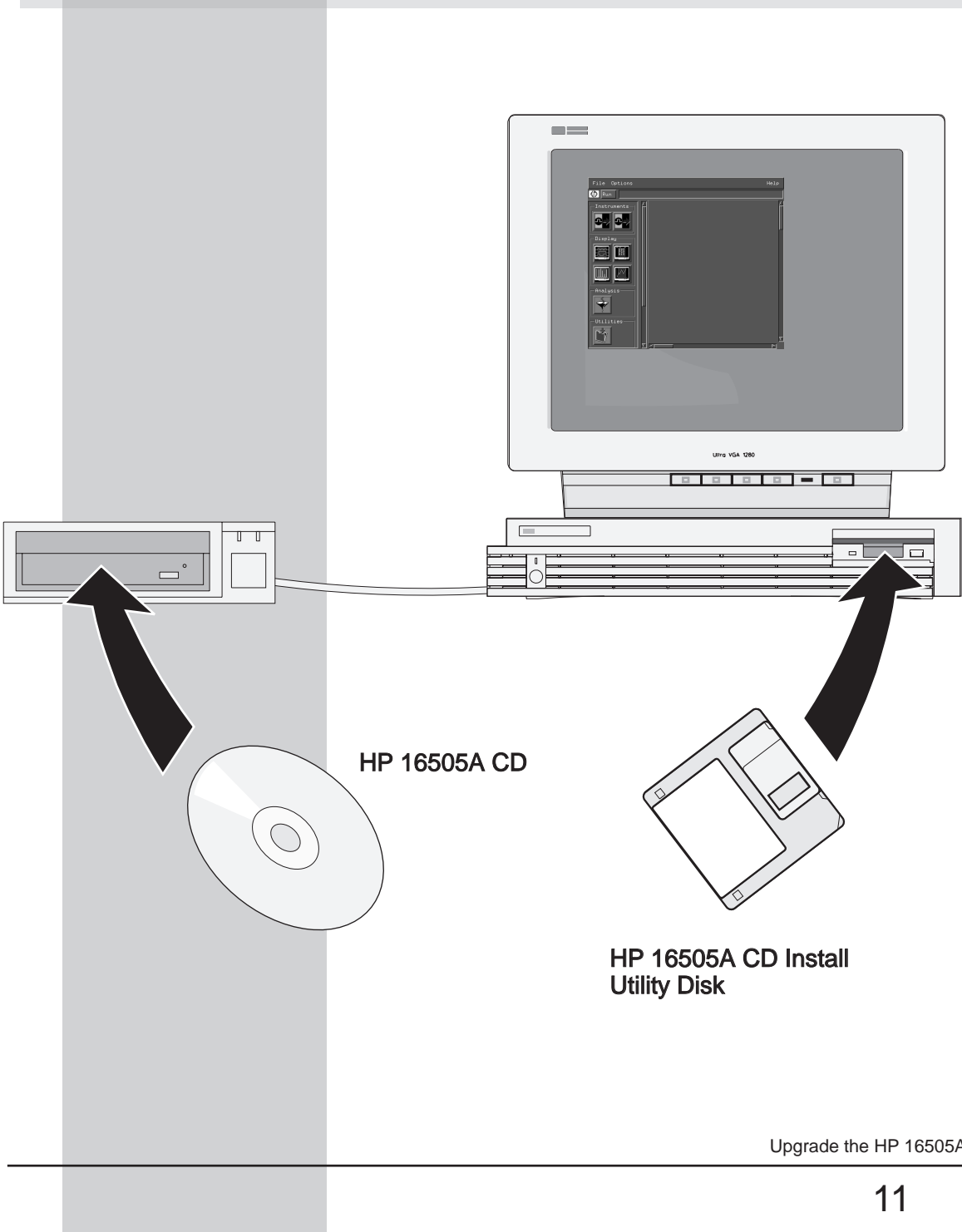


- 2 Connect the power cable.

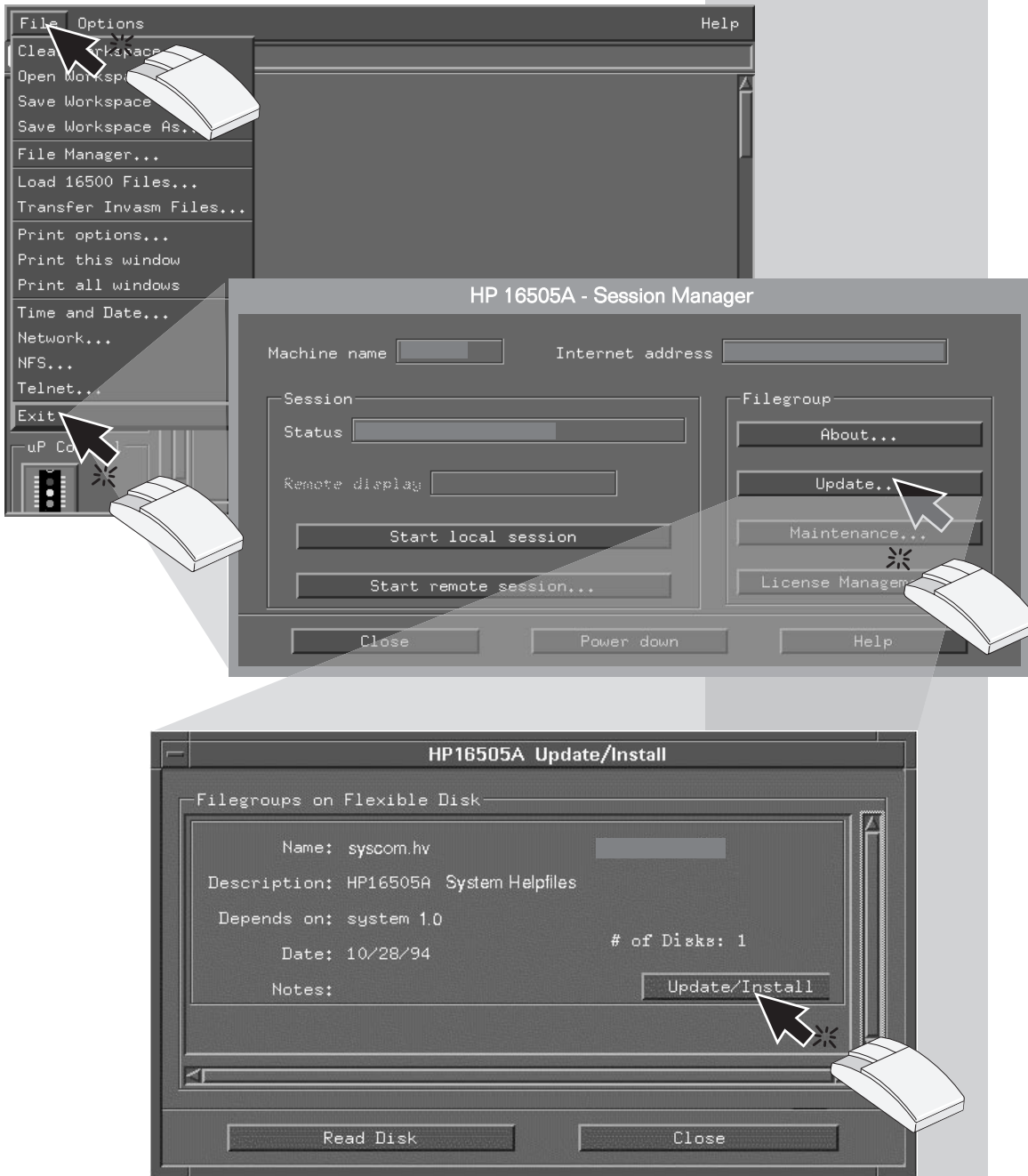
Turn on the CD-ROM drive and the HP 16505A.



Insert the CD and the flexible disk into the drives.



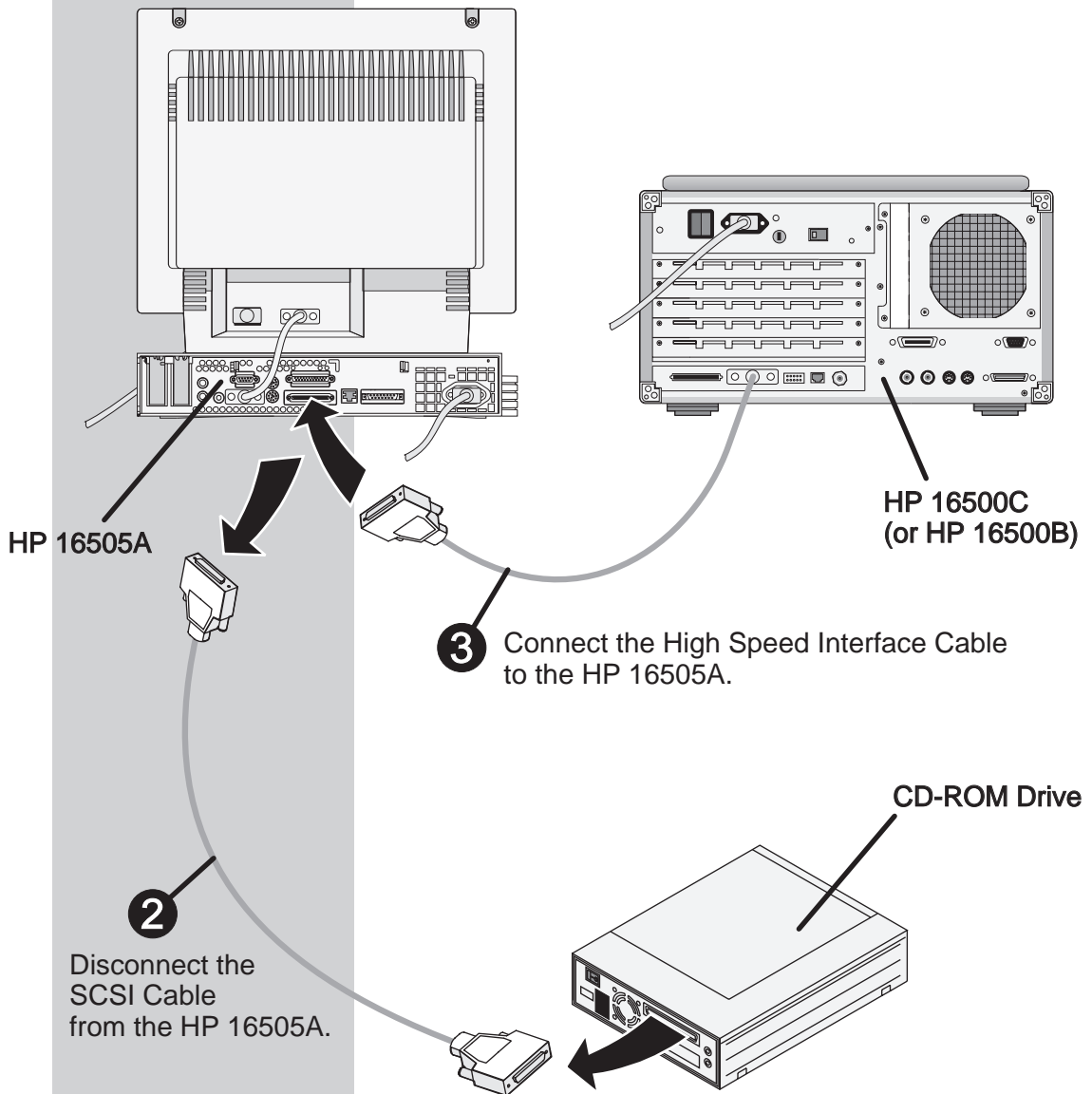
Click on the appropriate fields to begin loading the software upgrade.



Upgrade the HP 16505A

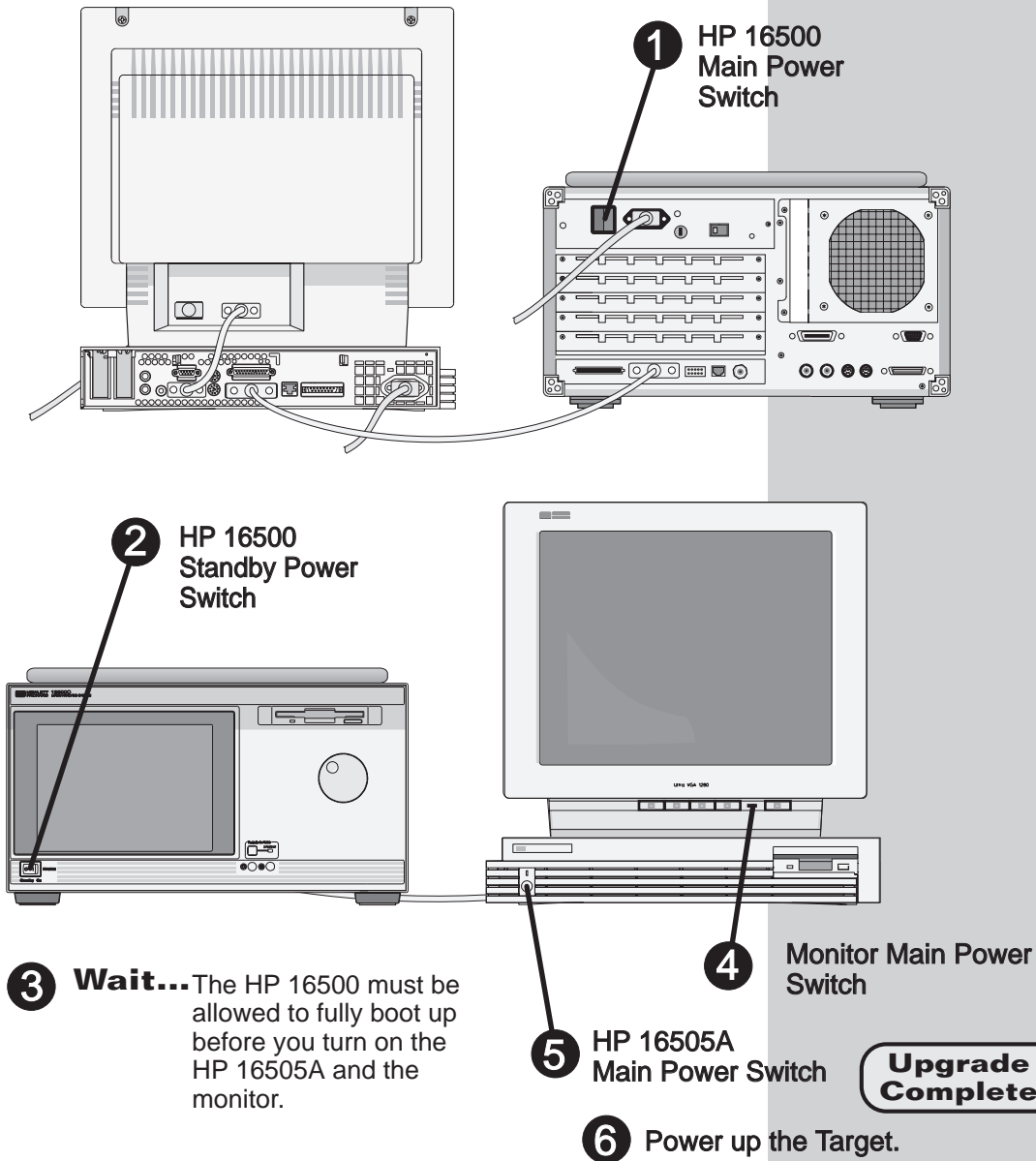
Upon completion, turn off the system and reconnect the High Speed Interface Cable.

1 Turn off the system.



Power-Up the HP 16505A System

Start up
Order



Power-Up the HP 16505A

Installing Additional HP 16505A Features/Product Support

Only the HP 16500 should be turned on when installing the HP 16500 software.

Power-down the target and the HP 16505A. **1**

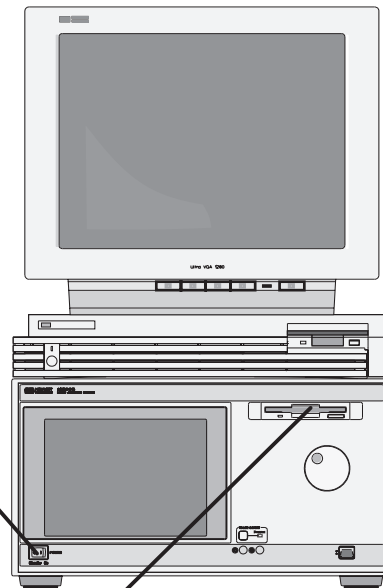
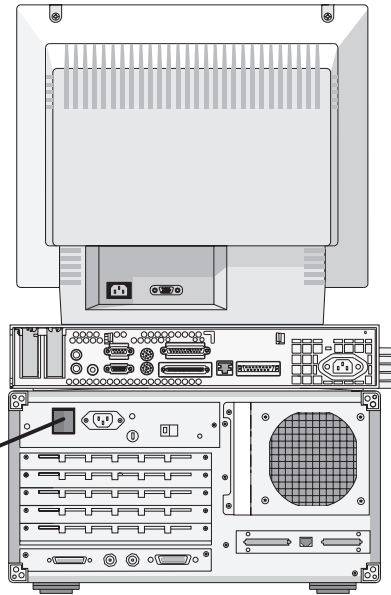
Start up Order

HP 16500(B or C) Main Power Switch **2**

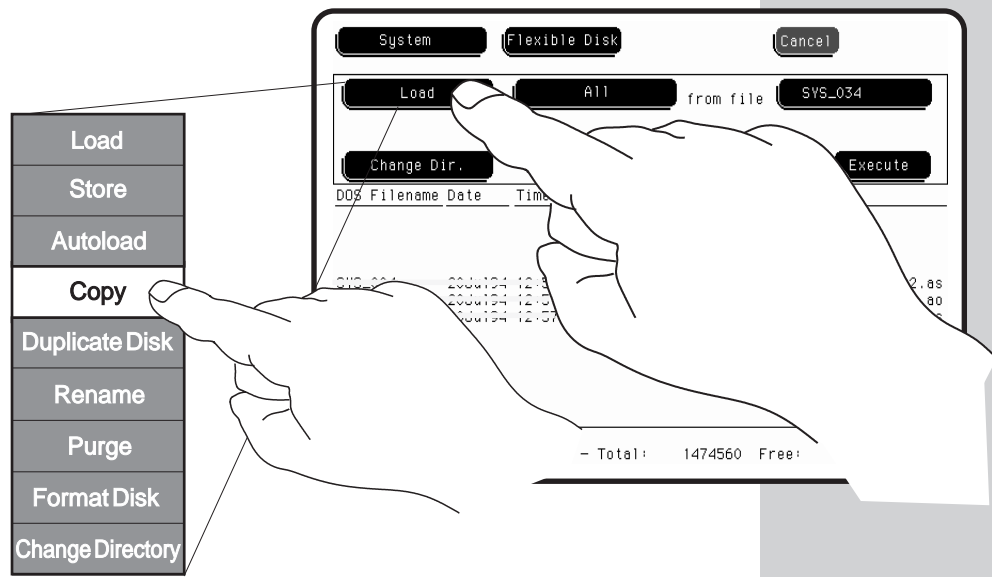
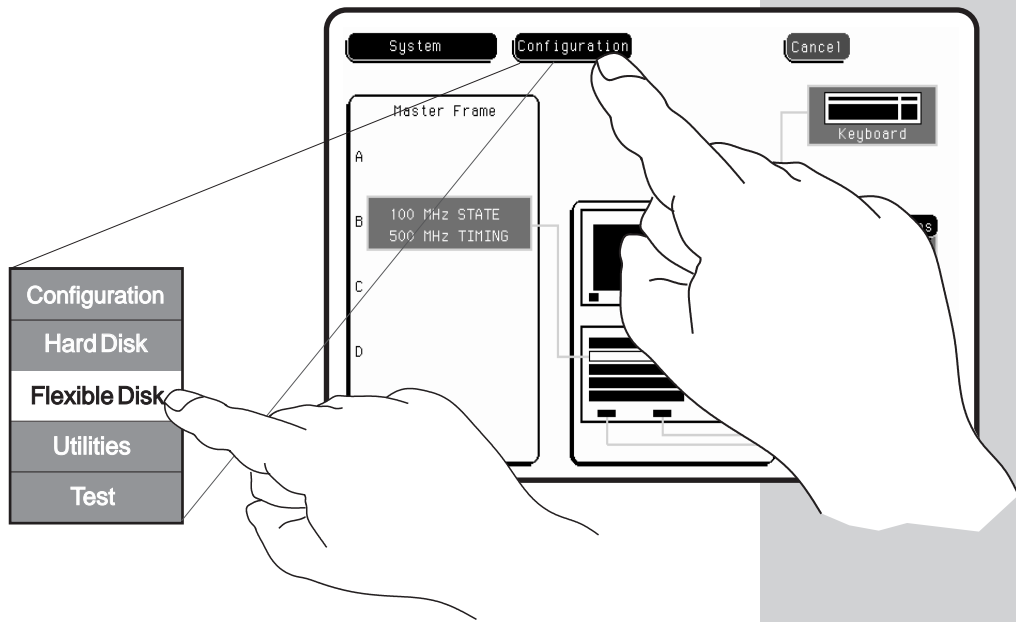
HP 16500 Standby Power Switch **3**

Allow 30 seconds to boot up. **4**

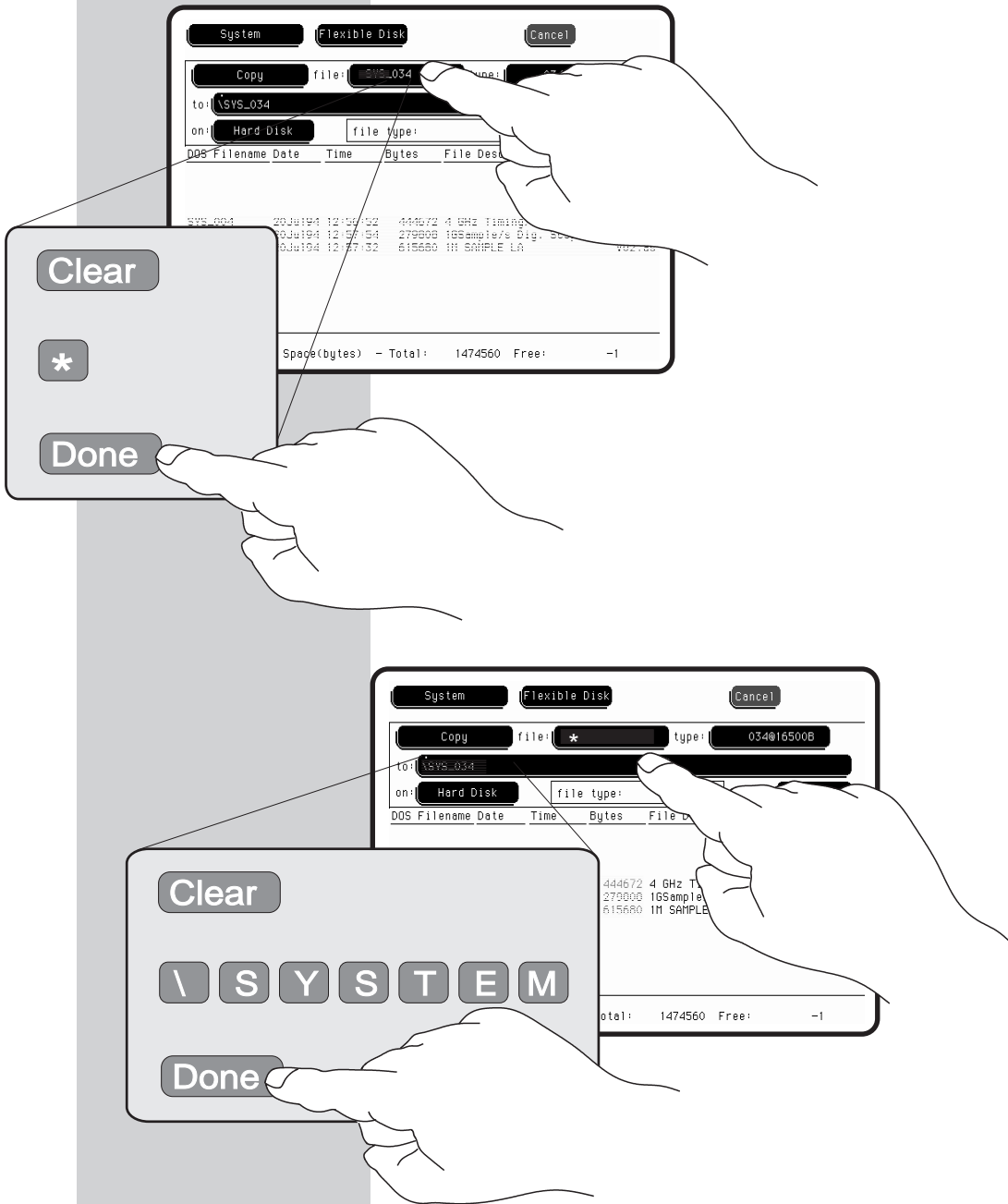
Insert the first disk of the HP 16500 operating system. **5**



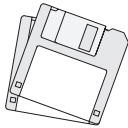
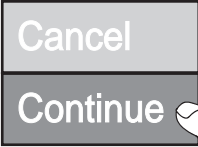
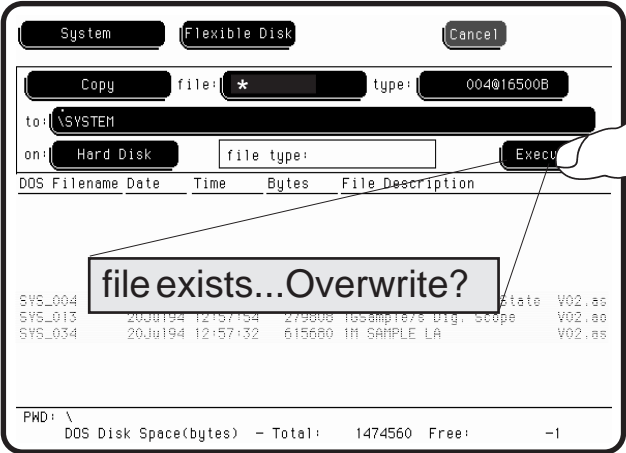
Select the HP 16500 flexible disk drive and set the file operation field to Copy.



Set the source field to the wildcard symbol and set the destination directory to \SYSTEM.



Select Execute to begin copying.



Insert the next disk and repeat this step until all HP 16500 files are copied.

Turn on the HP 16505A system and insert the Product/Features disk(s).

Start up
Order

Cycle the power on the HP 16500 to restart the system with the new files installed in the previous pages. (The main power switch on the HP 16500 rear panel may remain in the ON position.)

1 Cycle the HP 16500 Standby Power Switch

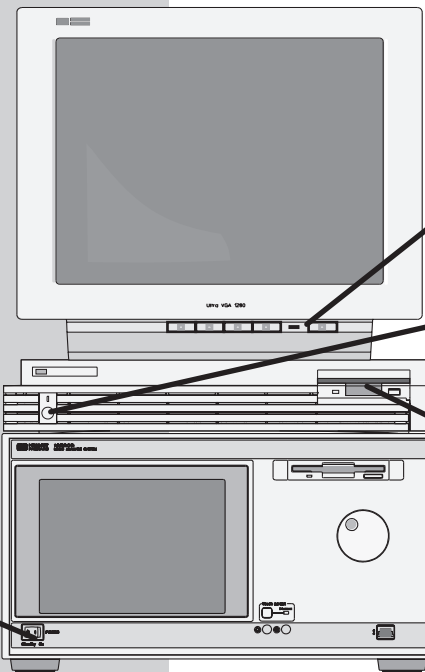
2 Wait...

The HP 16500 must be allowed to fully boot up.

3 Monitor Main Power Switch

4 Prototype Analyzer Main Power Switch

5 Insert the Product/Features Disk



Click on the appropriate fields to begin the file installation.



Upgrade Complete

Upon completion, reboot the HP 16505A system (page 14) and power-up the target.

© Copyright Hewlett-Packard Company 1997
All Rights Reserved.

Reproduction, adaptation, or translation without prior written permission is prohibited, except as allowed under the copyright laws.

Restricted Rights Legend.

Use, duplication or disclosure by the U.S. Government is subject to restrictions as set forth in subparagraph (c)(1)(ii) of the Rights in Technical Data and Computer Software clause at DFARS 252.227-7013 for DOD agencies, and subparagraphs (c)(1) and (c)(2) of the Commercial Computer Software Restricted Rights clause at FAR 52.227-19 for other agencies.

Hewlett-Packard Company
3000 Hanover Street
Palo Alto, California 94304
U.S.A.

Document Warranty

The information contained in this document is subject to change without notice.

Hewlett-Packard makes no warranty of any kind with regard to this material, including, but not limited to, the implied warranties of merchantability or fitness for a particular purpose.

Hewlett-Packard shall not be liable for errors contained herein or for damages in connection with the furnishing, performance, or use of this material.

Safety

This apparatus has been designed and tested in accordance with IEC Publication 1010, Safety Requirements for Measuring Apparatus, and has been supplied in a safe condition. This is a Safety Class I instrument (provided with terminal for protective earthing). Before applying power, verify that the correct safety precautions are taken (see the following warnings). In addition, note the external markings on the instrument that are described under "Safety Symbols."

Warning

- Before turning on the instrument, you must connect the protective earth terminal of the instrument to the protective conductor of the (mains) power cord. The mains plug shall only be inserted in a socket outlet provided with a protective earth contact. You must not negate the protective action by using an extension cord (power cable) without a protective conductor (grounding). Grounding one conductor of a two-conductor outlet is not sufficient protection.
- Only fuses with the required rated current, voltage, and specified type (normal blow, time delay, etc.) should be used. Do not use repaired fuses or short-circuited fuseholders. To do so could cause a shock or fire hazard.

● Service instructions are for trained service personnel. To avoid dangerous electric shock, do not perform any service unless qualified to do so. Do not attempt internal service or adjustment unless another person, capable of rendering first aid and resuscitation, is present.

● If you energize this instrument by an auto transformer (for voltage reduction), make sure the common terminal is connected to the earth terminal of the power source.

● Whenever it is likely that the ground protection is impaired, you must make the instrument inoperative and secure it against any unintended operation.

● Do not operate the instrument in the presence of flammable gasses or fumes. Operation of any electrical instrument in such an environment constitutes a definite safety hazard.

● Do not install substitute parts or perform any unauthorized modification to the instrument.

● Capacitors inside the instrument may retain a charge even if the instrument is disconnected from its source of supply.

● Use caution when exposing or handling the CRT. Handling or replacing the CRT shall be done only by qualified maintenance personnel.

Safety Symbols



Instruction manual symbol: the product is marked with this symbol when it is necessary for you to refer to the instruction manual in order to protect against damage to the product.



Hazardous voltage symbol.



Earth terminal symbol: Used to indicate a circuit common connected to grounded chassis.

WARNING

The Warning sign denotes a hazard. It calls attention to a procedure, practice, or the like, which, if not correctly performed or adhered to, could result in personal injury. Do not proceed beyond a Warning sign until the indicated conditions are fully understood and met.

CAUTION

The Caution sign denotes a hazard. It calls attention to an operating procedure, practice, or the like, which, if not correctly performed or adhered to, could result in damage to or destruction of part or all of the product. Do not proceed beyond a Caution symbol until the indicated conditions are fully understood or met.

CD ROM Drive Warranty

The manufacturer of the CD-ROM drive is responsible for post-sales support and warranty for the CD-ROM drive.

Product Warranty

This Hewlett-Packard product has a warranty against defects in material and workmanship for a period of one year from date of shipment. During the warranty period, Hewlett-Packard Company will, at its option, either repair or replace products that prove to be defective. For warranty service or repair, this product must be returned to a service facility designated by Hewlett-Packard. For products returned to Hewlett-Packard for warranty service, the Buyer shall prepay shipping charges to Hewlett-Packard and Hewlett-Packard shall pay shipping charges to return the product to the Buyer. However, the Buyer shall pay all shipping charges, duties, and taxes for products returned to Hewlett-Packard from another country. Hewlett-Packard warrants that its software and firmware designated by Hewlett-Packard for use with an instrument will execute its programming instructions when properly installed on that instrument. Hewlett-Packard does not warrant that the operation of the instrument software, or firmware will be uninterrupted or error free.

Limitation of Warranty

The foregoing warranty shall not apply to defects resulting from improper or inadequate maintenance by the Buyer, Buyer-supplied software or interfacing, unauthorized modification or misuse, operation outside of the environmental specifications for the product, or improper site preparation or maintenance.

No other warranty is expressed or implied. Hewlett-Packard specifically disclaims the implied warranties of merchantability or fitness for

Exclusive Remedies

The remedies provided herein are the buyer's sole and exclusive remedies. Hewlett-Packard shall not be liable for any direct, indirect, special, incidental, or consequential damages, whether based on contract, tort, or any other legal theory.

Assistance

Product maintenance agreements and other customer assistance agreements are available for Hewlett-Packard products. For any assistance, contact your nearest Hewlett-Packard Sales Office.

Certification

Hewlett-Packard Company certifies that this product met its published specifications at the time of shipment from the factory. Hewlett-Packard further certifies that its calibration measurements are traceable to the United States National Institute of Standards and Technology, to the extent allowed by the Institute's calibration facility, and to the calibration facilities of other International Standards Organization members.

About this edition

This is the HP 16505A Prototype Analyzer Software Upgrade Installation Guide

Publication number 16505-92010
Printed in USA.
Edition dates are as follows:

First edition, June 1997

New editions are complete revisions of the manual. Update packages, which are issued between editions, contain additional and replacement pages to be merged into the manual by you. The dates on the title page change only when a new edition is published. A software or firmware code may be printed before the date. This code indicates the version level of the software or firmware of this product at the time the manual or update was issued. Many product updates do not require manual changes; and, conversely, manual corrections may be done without accompanying product changes. Therefore, do not expect a one-to-one correspondence between product updates and manual updates.

The following list of pages gives the date of the current edition and of any changed pages to that edition.

All pages original edition

